

**Cargo Rail Service Center e.V.**  
**One association**  
**for everybody**  
**in rail freight traffic**

The Cargo Rail Service Center e.V. is a self-help organization that has been supporting its members in all matters relating to rail freight transport since 2007, jointly developing practical solutions for everyone.

More than 90 member companies are currently benefiting from the advantages of the association

- Railway operating companies •
- Railway owners/ECMs •
- Workshops and maintenance service providers •
- Manufacturers, processors and suppliers •
- Fillers, loaders and unloaders •
- Other service providers and suppliers •



# Services



## CRSC insurance

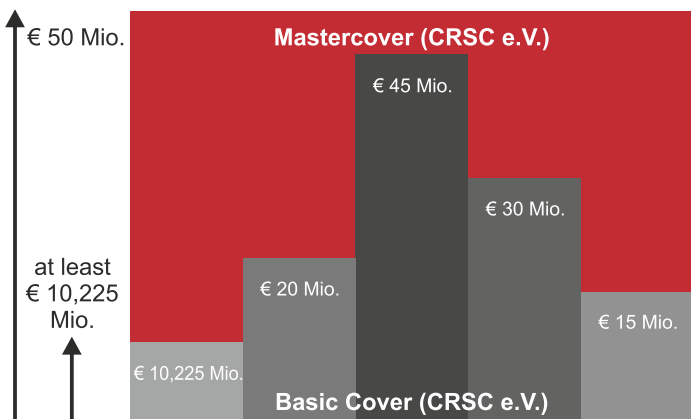
Industry solution for CRSC members:

The Cargo Rail Service Center e.V. currently offers special liability insurance for two areas that build on the existing liability insurance coverage of each member company.

The aim is to create a “safety net” for the industry so that major losses are better covered by a higher sum insured; the garage insurance is included in the membership fee.

At the same time, the CRSC offers access to attractive premiums through the association solution.

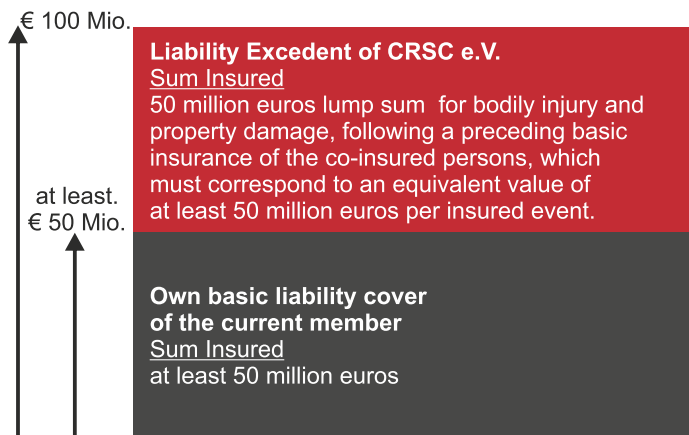
### Workshop



### CRSC e.V. workshop liability insurance

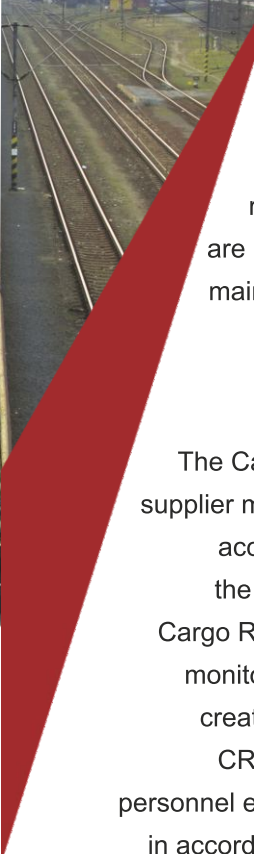
Insurance coverage up to  
50 Mio. EUR coverage sum

### Wagon owner



### CRSC e.V. wagon owner liability insurance

Insurance coverage up to  
100 Mio. EUR sum insured



The Implementing Regulation (EU) 2019/779 requires all ECMs to ensure that their suppliers are competent and have a requirements-compliant maintenance and management system in place as part of their responsibility for the maintenance of their rail vehicles.



## CRSC Supplier Monitoring

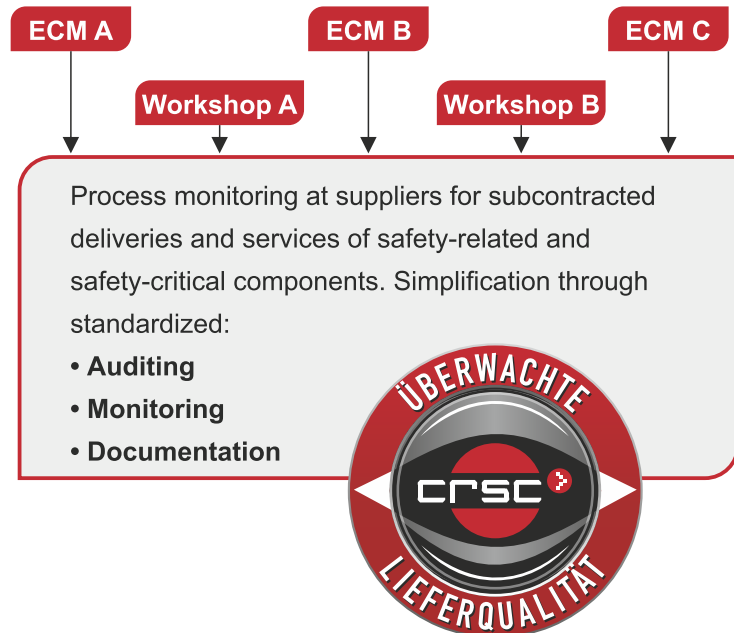
<https://www.crscev.de/en/supplier-monitoring.html>



The Cargo Rail Service Center e.V. offers centralized supplier monitoring for this purpose, which is exclusively accessible to members. This significantly reduces the administrative burden on our members, as the Cargo Rail Service Center e.V. organizes the complete monitoring. Here, the Cargo Rail Service Center e.V. creates a “win-win” situation for all parties involved.

CRSC members benefit from optimized costs and personnel expenses and receive the services at cost price in accordance with the principles of supplier monitoring.

Suppliers also benefit from reduced audit tourism.



## CRSC Skills Centre

At the CRSC Competence Center, experts exchange ideas on technical and subject-specific topics. Possible solutions are jointly developed, which are essentially related to:

- Requirements of the safety authorities
- Requirements of technical rules such as VPI EMG, standards, etc.
- Return of experience from operation and maintenance
- Requirements and information from member companies
- Information from the sector and the resulting requirements

Each member has the opportunity to bring topics to the competence center. Technical topics are also worked on in working groups, if necessary with additional external or internal companies and experts. Our members are informed about all activities by email or on the homepage.

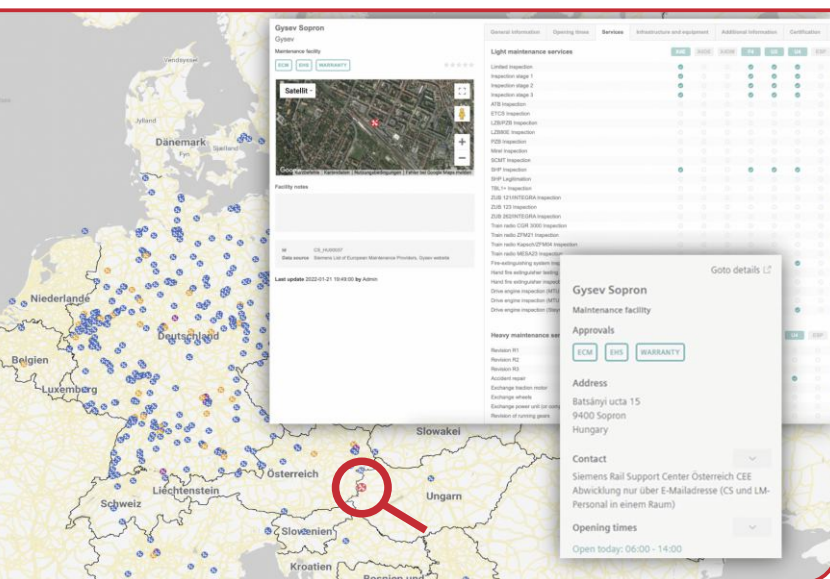
In addition, the competence center offers workshops on topics such as the following:

- Topics related to the Implementing Regulation (EU) 2019/779
- Risk topics with pleasure VO (EU) 1078/2012, DVO (EU) 402/2013
- Insurance concepts
- Maintenance topics
- Technical innovations

# Rail Service Hub (Workshopfinder)

Fleet managers (ECM III) are always looking for suitable solutions to maintain their locomotives and freight cars and get them back on the rails quickly. In addition, workshops (ECM IV) with free capacity are looking for new market opportunities to expand their business and to develop and maintain customer relationships. The "Rail Service Hub" is a platform that brings fleet managers and workshops closer together, improves communication flows and increases efficiency through digitalized processes.

Le « Workshop Finder », un module essentiel du « Rail Service Hub » (plateforme de services) est une application conçue pour faciliter la recherche d'ateliers pour locomotives ou wagons. Various filter criteria allow you to quickly find the right workshop, for example, using context data such as the location and timetable of the vehicle, system and vehicle types, services offered or certifications. The search results are displayed clearly in an interactive map and in tabular form. In addition, detailed pages for each workshop provide comprehensive information to help you make a booking decision, such as contact persons, contact details, working hours and service portfolios. Workshops and service providers have the option of managing their information themselves and keeping it up to date.



The CRSC has been following this topic for years (Railcloud) and was actively involved in the development of the Workshopfinder. Networking in this sector can only bring advantages for all participating organizations.

Please register and keep your data up to date:

<https://www.crscev.de/en/services/rail-service-hub.html>



## Contact

**Damian Pendzialek**

+49 151 629 009 76

damian.pendzialek@sfw-eberswalde.de

**Ines Villmann-Doll**

+49 5143 66 507-0

i.villmann-doll@villmann-gruppe.de

**Karsten Elstner**

+49 5151 40 08 50

elstner@kaminski-hameln.de

**Uwe Wullstein**

+49 3037 59 81 48

uwe.wullstein@hvle.de

**Helmut Lindenberg**

+49 2104 92 97 22

helmut.lindenberg@on-rail.com

**CRSC Cargo Rail Service Center e.V.**

**Kuhbrückenstraße 25**

**DE-31785 Hameln**

**info@crscev.de • www.crscev.de**